

## Loading

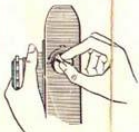


Illustration C

The **LORDOMAT** uses standard 20 or 36-exposure 35 mm film. To open the camera, turn the lock on its bottom from the "C" (closed) to the "O" (open) position, and remove the camera back. Insert the film cartridge in the well beneath the rewind knob and check to see that it engages the cartridge. Turn the rapid winder (A,1) in the direction of the arrow, until the slot (B,2) in the takeup spool faces you. If the rapid winder will not turn, trip the shutter by pressing the release button (A,15). This releases the double exposure prevention device, and permits you to turn the rapid winder. Now draw the film across toward the takeup spool and insert it in the slot, with about  $\frac{1}{4}$  inch extending out the other side. Be sure that the film is snug against the bottom of the slot, and turn the rapid winder again. Then replace the camera back.

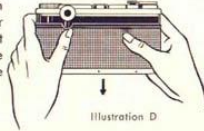


Illustration D

6

## Cable Release Socket

The **LORDOMAT** has a cable release socket (A,17). It is made to accept cable releases with tapered threads (like Kodak No. 5). A cable release minimizes camera movement, and should be used at shutter speeds slower than 1/25, and B.

## Tripod Socket

The **LORDOMAT** tripod socket is near the center of the camera's bottom. It accepts standard American tripod and flashgun screws.

## The Accessory Clip

The **LORDOMAT** accessory clip (A,5), on top of the camera, can be used for attaching flashguns, exposure meters, ect.

## Operating the Rapid Winder

Turn the rapid winder twice, in the direction of the arrow. This advances the film one frame, cocks the shutter, and engages the double exposure prevention device. Use the film release knob (A,3) to set the black diamond mark between 0 and 35 on the film counter dial (A,4). Turn the rapid winder (A,1) twice more, press the shutter release (A,15) and turn the rapid winder (A,1) twice again. The film counter (A,4) will now be at 0, and the camera



Illustration E

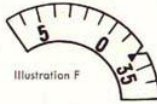


Illustration F

is set for your first picture. The counter (III F) will always show how many pictures you have taken.

**ATTENTION:** Be sure to cock the shutter **before** you set your film counter at the black diamond!

## Remember

Your **LORDOMAT** has a double exposure prevention. You must always turn the rapid winder twice after shooting, so the camera is ready for the next shot. The film

### Loading

◆ Page 6

### Film Load Indicator

◆ Page 8

### Lens Opening

◆ Page 8 and 9

### Focusing

◆ Page 9

### Zone Focusing

◆ Page 9 and 10

### Changing the Lenses

Page 10

### The Rangefinder-Viewfinder

Page 10

### The Shutter

◆ Page 11

### The Selftimer

◆ Page 11

### To take Flash Shots

◆ Page 11

### Cable Release Socket

Page 12

### Tripod Socket

Page 12

### The Accessory Clip

Page 12

### Rewinding the Film

Page 12

### Care

Page 12

### Operating the Rapid Winder

◆ Page 7 and 8

7

## Cable Release Socket

The **LORDOMAT** has a cable release socket (A,17) to accept cable releases with tapered threads. A cable release minimizes camera movement, and should be used at shutter speeds slower than 1/25, and B.

## Tripod Socket

The **LORDOMAT** tripod socket is near the center of the camera's bottom. It accepts standard American tripod and flashgun screws.

## The Accessory Clip

The **LORDOMAT** accessory clip (A,5), on top of the camera, can be used for attaching flashguns, exposure meters, ect.

The film release knob is also used after you have taken the last picture on the roll. Press it, then use the rewind knob (A,6b) to rewind film back into the cartridge for processing.



Illustration G

## Film Load Indicator

The film load indicator disc (A,6a) on your **LORDOMAT**'s rewind knob (A,6b) helps you to remember what type of film is in the camera. The outside row of numbers are ASA film speed ratings, the inside row, German DIN ratings. Set the rating of the film you are using opposite the black dot. When shooting color: use the "IN" setting for indoor (type A) film, the "OUT" setting for outdoor (Daylight) type color film.

## Lens Opening

Two indicating dots on the outer lens ring (A,13) mark the correct lens opening (A,8) on either side of the front of the milled focusing ring (A,10b). Two scales show stops from f/2.8 to f/22. f/2.8 is the largest lens opening, for use when shooting in poor light. f/22 is the smallest lens opening, and gives maximum depth of field — or the longest distance from nearest to furthest point of sharp focus.

8

There is a distinct relationship between shutter speeds and f/stops. A change to the next larger f/stop lets you use the next faster shutter speed, and vice versa.

In general, you should use fast shutter speeds and large f/stops to stop action, while sacrificing depth of field. When depth is important, use slower shutter speeds (plus a tripod at 1/25 and slower) and small f/stops.

## Focusing

The **LORDOMAT** focusing scale (A,10a) is calibrated from 3.5 feet to infinity. Use of the coupled rangefinder automatically assures sharp focus. If you prefer to measure distances, set the distance opposite the triangular mark on the depth-of-field scale (A,9).

9

## Zone Focusing

Zone Focusing permits you to take action shots quickly, without refocusing between shots. When shooting nearby subjects, set the focusing scale (A,10a) at 11 ft for sharp pictures from 7 to 35 feet. When shooting distant subjects, set focusing scale (A,10a) at 15 feet for sharp pictures from 8 feet to infinity. Stop down to f/16 in either case. The numbers on either side of the triangular focusing mark indicate depth of field at any given distance or f/stop.

### Film Load Indicator

◆ Page 8

### Lens Opening

◆ Page 8 and 9

### Focusing

◆ Page 9

### Zone Focusing

◆ Page 9 and 10

### Changing the Lenses

Page 10

### The Rangefinder-Viewfinder

Page 10

### The Shutter

◆ Page 11

### The Selftimer

◆ Page 11

### To take Flash Shots

◆ Page 11

### Cable Release Socket

Page 12

### Tripod Socket

Page 12

### The Accessory Clip

Page 12

### Rewinding the Film

Page 12

### Care

Page 12

The left hand number indicates nearest sharp point; the right hand number indicates the furthest sharp point. Read these under the f/stop you are using.

### Changing the Lenses

Turn counter-clockwise to remove, clockwise to install. Be sure to remove and insert lenses parallel to the front of the camera. Do not remove or insert at an angle. Avoid damage to the pin inside the camera, under the lens. It operates the coupled rangefinder.



Illustration H

10

### The Rangefinder-Viewfinder

The **LORDOMAT** rangefinder and viewfinder are combined in a single window (B,18) for maximum operating convenience. The coupled rangefinder is a superimposed-image type. As you look through it you see, in the center, an orange spot containing a double image. Focus on vertical objects whenever possible. Focus the lens until the double images overlap — you are then in focus.



Illustration I

### The Shutter

The **LORDOMAT** has a special behind-the-lens Prontor SVS (M-X-V) shutter, with speeds from 1 to 1/300, plus bulb. It is fully flash synchronized. Set the red dot on the shutter dial (A,7a) opposite the speed you want to use. The B (bulb) setting is for speeds of more than 1 second. When this setting is used, the shutter will remain open as long as the shutter release (A,15) is held down. The speed setting ring can be set before or after cocking the shutter.

### The Selftimer

The selftimer (V, A12) lets you take your own picture. It delays the shutter action for 8-10 seconds after the release (A,15) is pressed. It is advisable to mount the camera on a tripod or other support when using this feature. To use the selftimer; set the shutter at any speed other than B, use the rapid winder (A,1) to advance the film and cock shutter, and set the lever A12 at V (green mark). It is immaterial whether the lever A,12 is set before or after the film is transported.

### To take Flash Shots

**When using wire-filled lamps:** like General Electric M2, No. 5, 8, 11, or 22; or Sylvania Press 40, No. 8, or 25; use any shutter speed, and the lever on the right hand side of the shutter housing on the M setting.

**When using gas-filled bulbs:** like General Electric's SM or Sylvania's SF; use shutter speeds of 1/50 or slower, and set the lever (A,12) on the X-setting.

**When using electronic strobe flash:** use any shutter speed, and set the lever (A,12) on the X-setting. When you want to take flash pictures using the selftimer you must set the lever (A,12) at V-position (green). In this position you may use all flash bulbs at 1/25 sec. or longer speeds (1/10 sec. etc.) or electronic flashguns at any shutter speed up to 1/300 sec.

- ◆ The Shutter Page 11
- ◆ The Selftimer Page 11
- ◆ To take Flash Shots Page 11
- ◆ Cable Release Socket Page 12
- ◆ Tripod Socket Page 12
- ◆ The Accessory Clip Page 12
- ◆ Rewinding the Film Page 12
- ◆ Care Page 12

11

### Cable Release Socket

The **LORDOMAT** has a cable release socket (A,17). It is made to accept cable releases with tapered threads (like Kodak No. 5). A cable release minimizes camera movement, and should be used at shutter speeds slower than 1/25, and B.

### Tripod Socket

The **LORDOMAT** tripod socket is near the center of the camera's bottom. It accepts standard American tripod and flashgun screws.

### The Accessory Clip

The **LORDOMAT** accessory clip (A,5), on top of the camera, can be used for attaching flashguns, exposure meters, ect.

### Rewinding the Film

After taking 20 or 36 exposures, depending on the film length, press the film release knob (A or B-3) — see also ill. K — pull out the rewind knob (A,6b) and turn it in the direction of the arrow. Continue turning until no tension is felt, open the camera and remove the film cartridge for processing.



Illustration K

12

### How to use your **LORDOMAT** 35 mm Camera

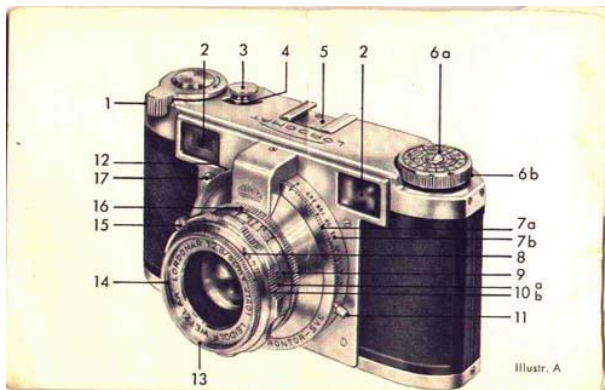
Your new **LORDOMAT** 35 mm camera is a precision instrument made to give you years of faithful service. It is not difficult to use, and will produce top quality pictures.

We suggest that you take a few minutes to read the following instructions, operating the camera as you read. The short time spent will repay you with good pictures right from the start.

### Care

Never force any part of your **LORDOMAT**. Never oil any part of the camera. Never rub, when cleaning the lens. Wipe it gently with lens tissue, or a soft lintless cloth.

Protect your camera from the elements, and from sand.



### The Parts of the LORDOMAT Camera

- |                            |                                  |
|----------------------------|----------------------------------|
| 1 Rapid winder             | 10a Focusing scale               |
| 2 Rangefinder — viewfinder | 10b Milled focusing ring         |
| 3 Release knob             | 11 Flash synchronization contact |
| 4 Film counter dial        | 12 Synchronization lever (M-XV)  |
| 5 Accessory clip           | 13 Outer lens ring               |
| 6a Film load indicator     | 14 Thread                        |
| 6b Rewind knob             | 15 Shutter release button        |
| 7a Speed setting ring      | 16 Lens attaching ring           |
| 7b Film speed ring         | 17 Cable release socket          |
| 8 Lens openings            |                                  |
| 9 Depth-of-field ring      |                                  |
- 
- |                        |  |
|------------------------|--|
| 1 Rapid winder         | 18 Coupled rangefinder — viewfinder eyepiece |
| 3 Release knob         | 19a b sprockets                              |
| 4 Film counter dial    | 20 takeup spool                              |
| 5 Accessory clip       | 21 slot                                      |
| 6a Film load indicator | 22 film cartridge                            |
| 6b Rewind knob         | 23 guides                                    |

Illustr. A

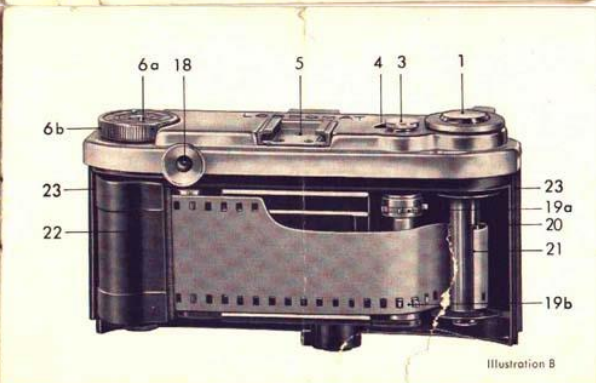
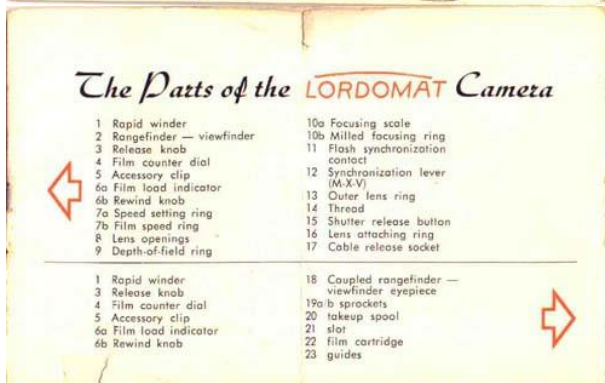


Illustration B



**BAD NAUHEIM**  
Germany

Printed in Germany - No. 5455

# LORDOMAT



*Instructions*